

# MEM



Sylvain Légaré / MEM

## Rental spaces

The MEM – Centre des mémoires montréalaises has various spaces available for rent. Located in downtown Montréal, the MEM is in the heart of the Quartier des spectacles, near the Saint-Laurent metro station. The MEM's fully accessible spaces provide an inspiring setting for events of all kinds, with flexible configurations, a convenient location, and one-of-a-kind views of the city.



## Rental spaces

The MEM's versatile rental spaces can be configured in various ways. Our technical team is available to help you determine your needs, based on the type of event you are planning.

Non-profit organizations receive a 30% discount on the hourly rate, from Monday to Wednesday during the day.



### Reservations

mem-locations@montreal.ca

514 622-6387





The cabaret is a theatre equipped with state-of-the-art audiovisual equipment. This versatile space can be easily configured to suit your event needs. Black curtains and a lighting system create the desired atmosphere. The cabaret can accommodate up to 110 people and offers a view of boulevard Saint-Laurent.

#### DETAILS

- › Dimensions: 173 m<sup>2</sup> / 1862 ft<sup>2</sup>
- › Maximum capacity:
  - Cabaret seating = 80 people
  - Theatre reception = 110 people
  - Cocktail seating = 130 people

#### RENTAL RATE

- › \$265/hour, 5-hour minimum
- Prices include taxes and are subject to change without notice.

#### Reservations

mem-locations@montreal.ca

514 622-6387



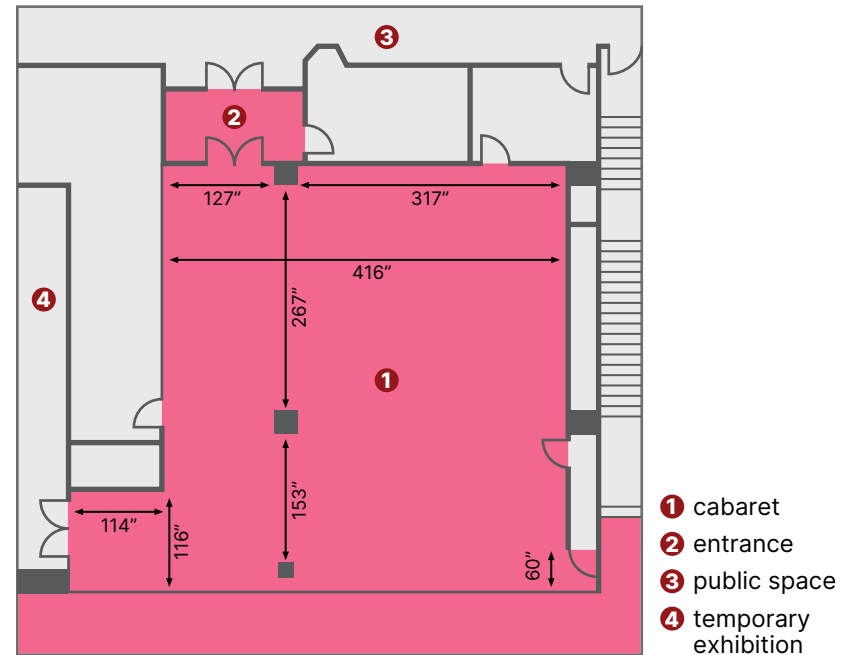
## INCLUSIONS

### SERVICES AND EQUIPMENT

- › Wi-Fi connection
- › Preprogrammed lighting options

### FURNITURE

- › 20 bistro tables (36"), adjustable from 30" to 42" high
- › 6 rectangular tables (60" x 30")
- › 110 red chairs
- › Stage (8' x 16' x 16")



## Reservations

mem-locations@montreal.ca

514 622-6387





The Belvédère's floor-to-ceiling windows offer a spectacular view of rue Sainte-Catherine Ouest and the new Esplanade Tranquille. This one-of-a-kind space in the heart of downtown Montréal is the perfect venue for launches, cocktails, and receptions.

#### DETAILS

- › Dimensions: 77 m<sup>2</sup> / 829 ft<sup>2</sup>
- › Maximum capacity: 60 people (cocktail reception)

#### RENTAL RATE

- › \$195/hour, 5-hour minimum
- Prices include taxes and are subject to change without notice.

#### Reservations

mem-locations@montreal.ca

514 622-6387



# BELVÉDÈRE

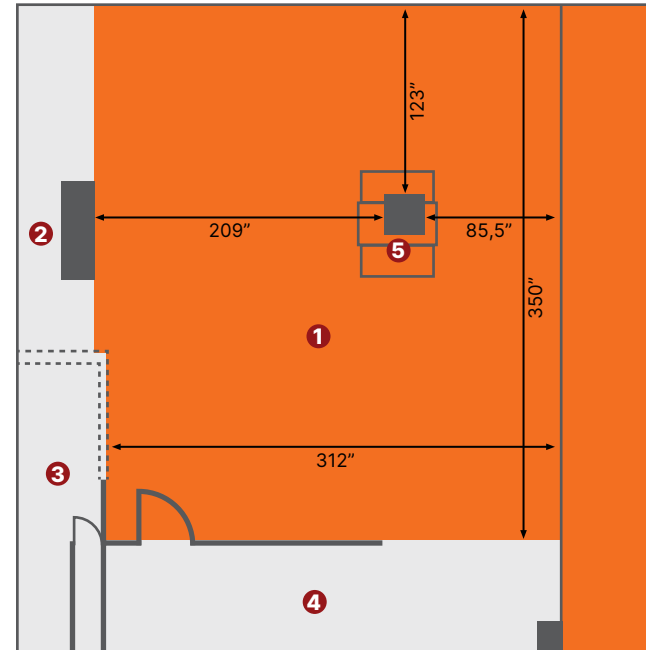
## INCLUSIONS

### SERVICES AND EQUIPMENT

- › Wi-Fi
- › Bluetooth sound system with microphones and console

### FURNITURE

- › 10 bistro tables (36"), adjustable from 30" to 42" high



## Reservations

mem-locations@montreal.ca

514 622-6387



## WORKSHOP 1



**This light-filled space offers a view of rue Clark. A kitchenette with a refrigerator, sink, and microwave is located next to the room.**

### DETAILS

- › Dimensions:  
Workshop 1 = 60 m<sup>2</sup> / 646 ft<sup>2</sup>  
Workshop 2 = 43 m<sup>2</sup> / 463 ft<sup>2</sup>
- › Maximum capacity:  
Conference seating = 20 people  
Cocktail reception = 35 people  
Theatre seating = 35 people

## WORKSHOP 2



**This space can be adapted to accommodate a variety of events. It has direct access to a kitchenette equipped with a refrigerator, sink, and microwave.**

### RENTAL RATE

- › \$150 for a half day (4-hour maximum)
  - › \$265 for one day
- Prices include taxes and are subject to change without notice.

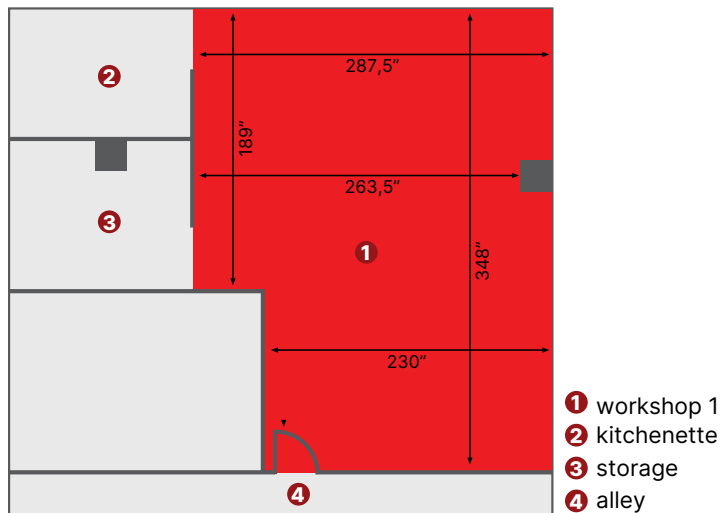
## Reservations

mem-locations@montreal.ca

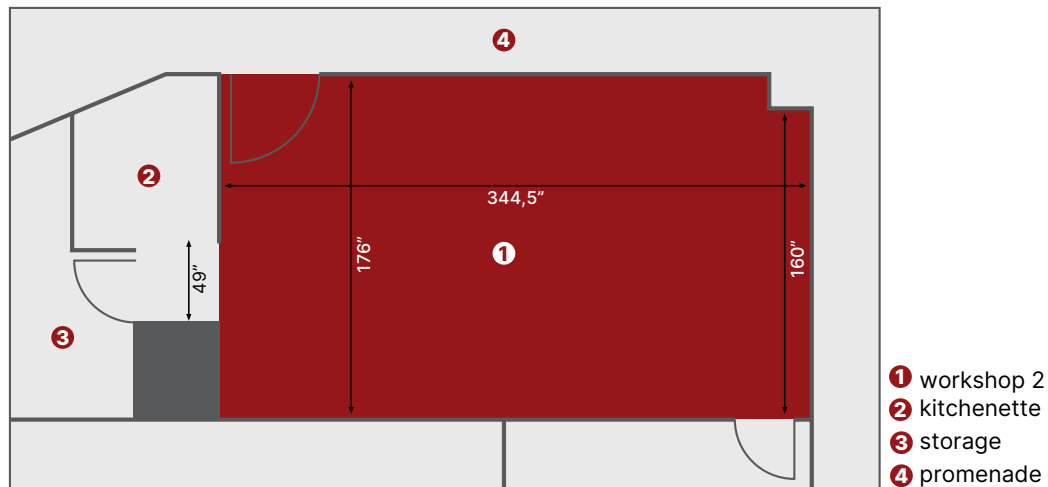
514 622-6387



## WORKSHOP 1



## WORKSHOP 2



## INCLUSIONS

## SERVICES AND EQUIPMENT

- › Wi-Fi connection
- › 75-inch Ultra HD 4K screen with laptop connection
- › Sound bar

## FURNITURE

- › 10 rectangular tables (60" x 30") with tablecloths
- › 35 chairs

## Reservations

mem-locations@montreal.ca

514 622-6387



## Other services

### AUDIOVISUAL SERVICE

Our technical team will help you determine your audiovisual equipment needs and can provide a technician to assist you during your event. The technical team authorizes, installs, and supervises audiovisual installations. Service fees and equipment costs are not included in the rental rate and are the responsibility of the renter. Contact our team for an estimate.

### EQUIPMENT AVAILABLE FOR RENT

- › Tablecloths for bistro tables
- › Modular 4' x 4' stages, height adjustable to 16" or 32"
- › Black curtains
- › Sound system with microphone and console
- › 4.8m x 2m screen and 4K high-definition projector

### CATERING AND BAR

- › No preferred vendors and no venue commission on catering.
- › Studio 1 can be used as a catering space, subject to availability and a rental fee. Several electrical circuits are available for the connection of your devices.
- › Turnkey bar service required for alcohol service.

### HUMAN RESSOURCES

The presence of staff may be required depending on the time. This is determined by the MEM reservation team.

### PAID PARKING

Public parking is available inside the building. An accessible elevator connects directly to the MEM on the first floor.

**The MEM team can support and advise you in planning your event. Site visits are by appointment only and subject to availability of the spaces.**

## Reservations

mem-locations@montreal.ca

514 622-6387

